

Personal Exposure Meter EME SPY 120

EME SPY is a selective and isotropic personal exposure meter (PEM) that has been designed for epidemiological studies. It can measure 12 frequency bands while identifying the contribution of each emitter. It can memorize and transfer data and its software can make fast calculations and present statistical results. Results can be exported in Excel format and analysed in V/m, $\mu\text{W}/\text{cm}^2$ or in % compared to the ICNIRP's recommendations on EMF exposure limits.

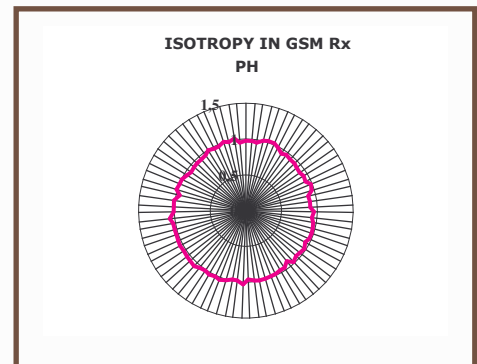
The PEM is delivered in a suitcase, which includes the EME SPY 120 device, the adapted battery charger, the USB cable to connect the device to a PC, the user manual and the CD of the EME SPY Analysis software.



TECHNICAL CHARACTERISTICS

FREQUENCY RANGES		AXIAL ISOTROPY
FM	88 MHz → 108 MHz	± 0.3 dB
TV3	174 MHz → 223 MHz	± 2.5 dB
TETRA	380MHz → 400MHz	± 1.1 dB
TV4&5	470 MHz → 830 MHz	± 1.1 dB
GSM Tx	880 MHz → 915 MHz	± 0.8 dB
GSM Rx	925 MHz → 960 MHz	± 1.0 dB
DCS Tx	1710 MHz → 1785 MHz	± 2.0 dB
DCS Rx	1805 MHz → 1880 MHz	± 1.6 dB
DECT	1880 MHz → 1900MHz	± 1.3 dB
UMTS Tx	1920 MHz → 1980 MHz	± 1.4 dB
UMTS Rx	2110 MHz → 2170 MHz	± 1.8 dB
WIFI	2400 MHz → 2500 MHz	± 3.2 dB

Probe	built in three axis E probe
Sensitivity	0.05 V/m
Dynamic	40 dB at 5 V/m

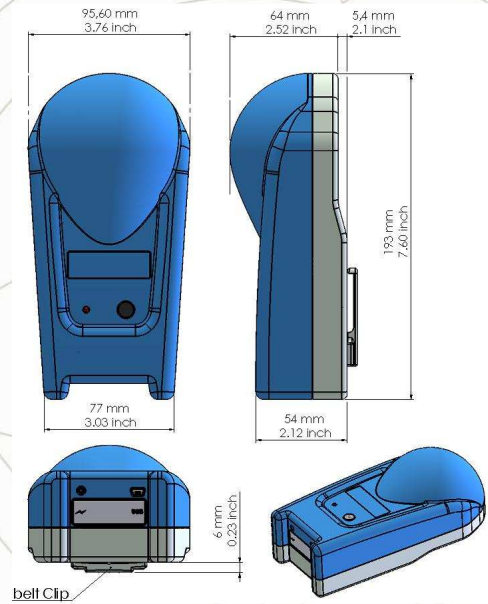


ANTENNESSA

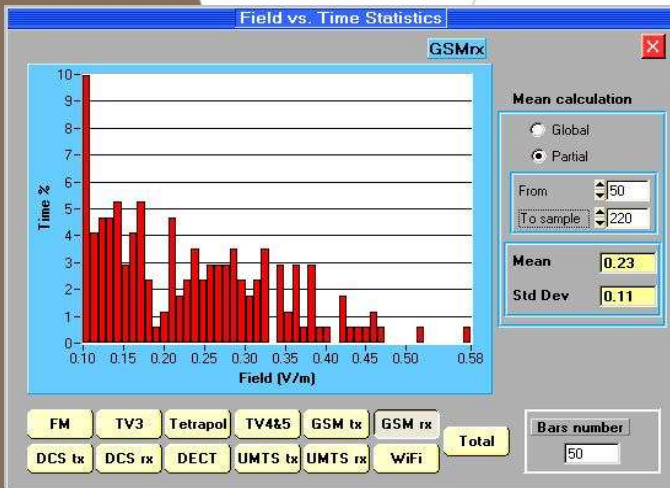
Data logging	Number of data points	7168
	Logging intervals	4-255s
	Logging time	> 7 hours at a rate of 1 sample/4s
Working conditions		-10 to 50°C, 85% of humidity
Battery autonomy		> 7 days (120 s period)
Power supply of battery charger		90-264 VAC, 50-60 Hz

MECHANICAL CHARACTERISTICS	
Dimensions	193 X 95.6 X 69.4 mm (L, W, H)
Weight	450 g
Protection	IP 43

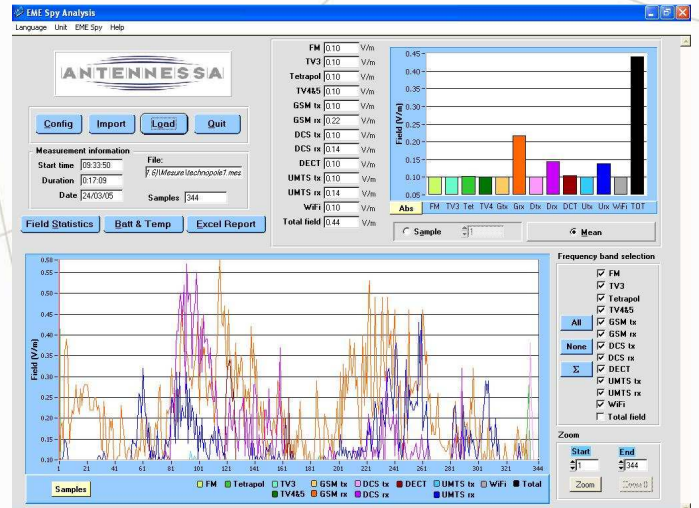
HARDWARE REQUIREMENTS	
	PC Pentium 500 MHz
Cable link	USB Port
Operating system	Windows 98/2000/XP
Memory	256 MB RAM
Free space on hard disc	200 MB



Data processing and presentation of the results



Display of the statistical values, with the mean and standard deviation



Display of the measured data, inclusive total field and historical diagramm